



Next-gen GRE Pipe Solutions for Oil, Gas, Mining & Infrastructure





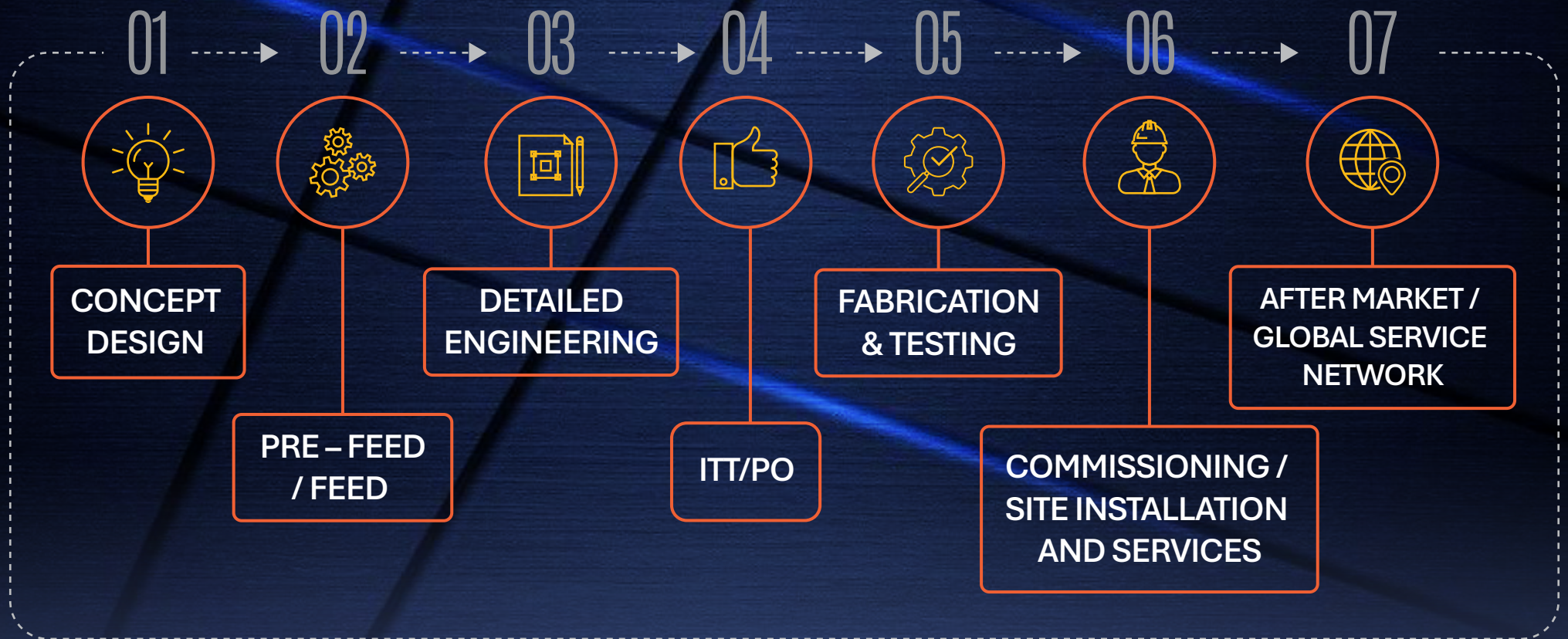
ABOUT US

- GRE Construction and Fibre glass EPCM Firm in Australia
- Supply of NOV Bondstrand GRE Pipes and Fittings
- Site Installation of GRE Piping (Onshore & Offshore)
- Pre-fabrication of GRE Pipes and Fittings in Perth
- FRP Gratings and Ladders for Offshore
- FRP Structures
- FRP Tanks and Pressure Vessels
- DNV ISO 9001, 14000 & 45001 Accredited Organization



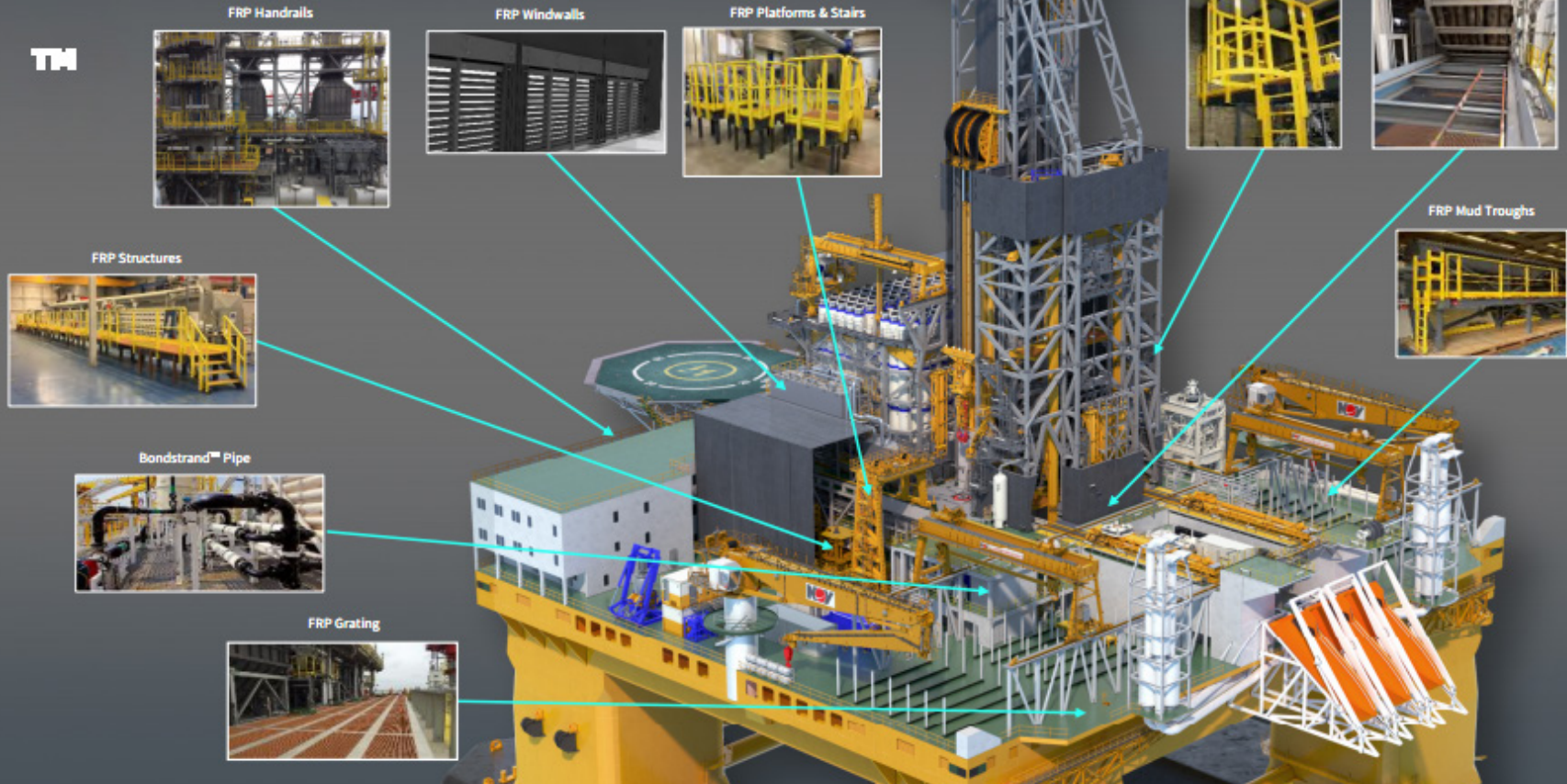
STRATEGIC PARTNERS FOR PROJECT SOLUTIONS

From design to execution, we will partner with you to provide proven performance composites that increase safety, reliability and operational uptime.



OFFSHORE SERVICES

TM



FRP Structures

- 40 years of offshore experience
- 40 years of design life
- 1/3 weight of steel products
- Zero corrosion – no metallic type degradation
- Higher safety integrity
- Used by many major IOC's and NOC's
- Optimum CAPEX and OPEX solution

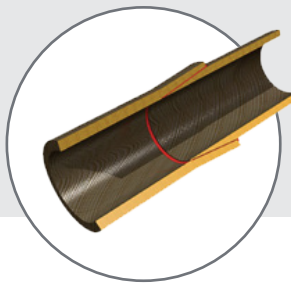
GRE Piping

- 50 years of a Tshore experience
- 40 year design life
- Lighter than steel alloys
- Cost effective
- Zero corrosion – no metallic type degradation
- Less energy use in manufacturing pipe
- Installed on 18G FPSO's, FLNG's, _NG carrier, multiple platforms globally
- Used by all major IOC's and NOC's



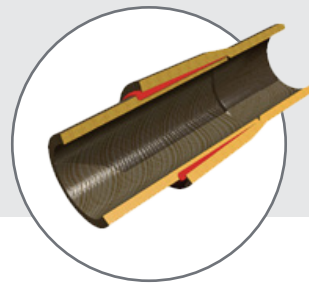
GRE/GRP PIPE CONNECTIONS – CHEMICAL AND INDUSTRIAL

Taper-taper joint



- Adhesive-bonded joint
- Tapered male/female ends
- Available in 2-40 inch
- Pressure class 10 to 75 bar

Quick -lock joint



- Adhesive-bonded joint
- Straight spigot and tapered bell
- Available in size 1-6 inch
- Pressure class: Up to 16 bar

Butt-and-wrap lamination joint



- Lamination point
- Plain ends
- Available in 1-64" (up to 120)inch
- Pressure class: 10 to 25 bar

Butt-and-wrap lamination joint



- Self retained mechanical joint
- Locking keys inserted between bell and spigot
- Available in 1-40 inch
- Pressure class: 20 to 50 bar

PROJECT DELIVERY



TESTING AT FORRESTDALE, PERTH

- Testing facilities and services
- Raw material inspection
- Product curing -TG report
- Glass Content - Glass resin ratio report
- Pipe /Fitting hydrostatic Pressure Test - 1.5 x, 5min
- Spool Hydrostatic Pressure Test - 1.5 x 10 min 10%
- Visual Instruction for Surface defects
- Dimensional check
- Order Hardness Check
- Conductivity Check
- Marking
- In-house Fire Endurance Testing



COMPOSITE PRODUCTS FOR VENTILATION DUCTING

FM4922 GRVE DUCTING FOR SEMICONDUCTOR PLANTS & DATA CENTRES

Applications:

- Acid fumes
- Chloride ventilation
- Scrubber Systems
- Chemical plant ventilation

Technical Benefits:

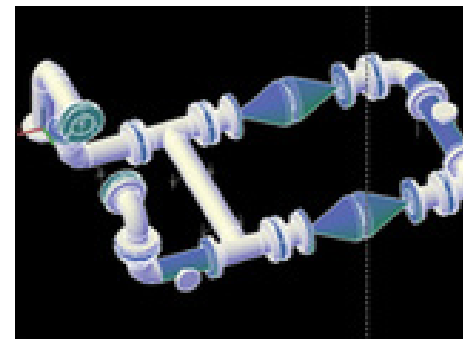
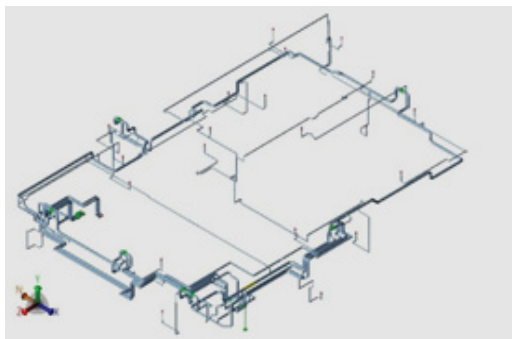
- Corrosion resistant resins
- Custom diameters and shapes
- Lightweight and modular
- Long service life in aggressive environments





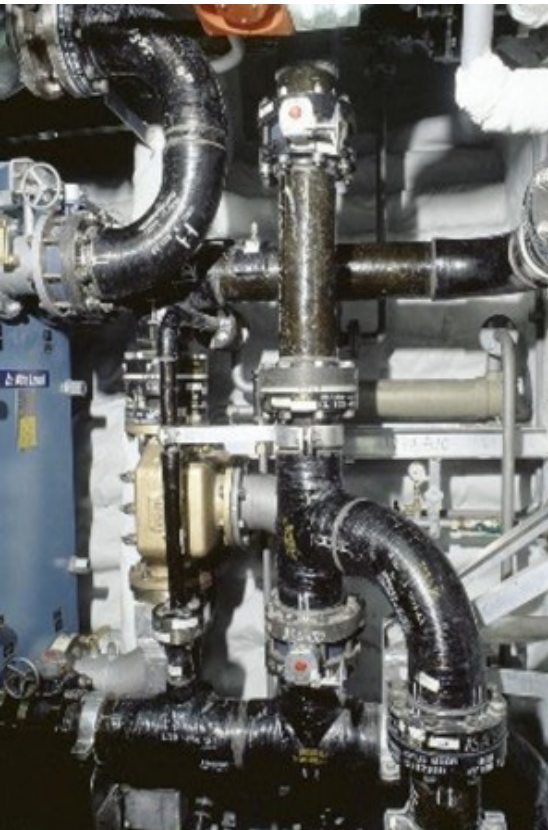
ENGINEERING CAPABILITIES

- 3D Laser Surveys
- Material Specifications
- Line sizing (Head loss calculation)
- Chemical resistance test using line list
- Preliminary Pipe design
- Math CAD Calculation sheets
- AWWA calculation
- Stress analysis (static/ dynamic)
- Hydraulic analysis
- Isometric s and spool drawings
- Support type & schedule
- Material take off
- Project design verification and R&D
- Special spool Design
- PDS/PDMS (Pipe and fitting database)
- Design review



APPLICATIONS

- Fire water (Well)
- Cooling water
- Sea water service
- Open drains
- Well lines
- Produced water
- Sodium Hypochlorite
- Fire water
- Potable / Service water
- Closed drains
- Jump lines
- Grey water
- Caissons



OUR PARTNERS

Energy & Resources



Industrial, Defence and Infrastructure



EPCM Contractor



KEY PROJECTS

Representative project experience across our service lines



Largest GRP piping project undertaken — DN50 to DN2000. End-to-end supply, fabrication and installation.

Client: **WaterCorp WA** · Scope: GRP piping supply & install



62+ GRE spools engineered, fabricated and delivered for INPEX Browse (Ichthys) offshore asset management.

Client: **INPEX** · Scope: 62 GRE Spools



PVC-GRVe dual laminate piping installation on the world's largest FLNG facility offshore north-west Australia.

Client: **Shell** · Scope: Offshore Dual Laminate



First major EPCM contract — Water Treatment Plant and freshwater GRE piping scopes at Chevron Gorgon.

Client: **Chevron** · Scope: WTP & FW GRE



Multiple GRE replacement and upgrade projects across Woodside's NRA, Goodwyn, Okha and Pyrenees assets.

Client: **Woodside** · Scope: Multi-asset GRE



GRE composite piping systems for multiple INCAT high-speed commercial ferry vessels — corrosion free.

Client: **INCAT** · Scope: Vessel GRE Piping

KEY PROJECTS

Representative project experience across our service lines

Turn Around 2026



YARA

- Engineering of GRVE Piping – 12” to 72”
- Prefabrication of GRVE Pipes – 72” x 40” & 48” x 32”
- Site Installation

Client: **Yara**

Pluto Train 1 Modification



WOODSIDE

- Design, Engineering of GRE FW, AOC Drain Lines 3”-24”
- Prefabrication of GRE Pipes
- Site Installation and Hydrotesting of Lines

Client: **Woodside**

SWAS Analyser, BCM & SD Scope



INPEX

- Supply and Installation of GRE 2400C (PN25 bar) at 123C
- Size 3”-16”
- Fabrication of GRE Spools
- Hydrotesting ▪ Site Installation

Client: **Inpex**

BWI Fire water



CHEVRON

- Supply of GRE Fire Water Lines – Bondstrand 2420 Series 6”,8”,10” & 12”
- Prefabrication
- Installation and Hydro witness

Client: **Chevron**

GMP Project



VIVA

- GRE Fire Water Lines – Bondstrand 2420 Series
- Installation of GRE FW 8”,10” & 12”
- Hydro testing

Client: **Viva**

Phase2B



INPEX

- CWCM Heat Exchanger GRE Spools
- HAZ Drain GRE Piping ▪ Bulk TCR Piping
- Supply of Bondstrand Special Series 2425C (18”,20” & 24”)
- Pre-fabrication of GRE Pipes and Fittings at Sunrise Workshop, Perth ▪ Hydrotesting

Client: **Inpex**

KEY PROJECTS

Representative project experience across our service lines



VIVA

- Installation of 6" & 8" GRE Piping
- Hydrotesting
- Ngujima-Yin FPSO Install

Client: **Viva**



WOODSIDE

- Supply of 2420C GRE Pipes and Fittings – HEX A & B – NRC offshore
- Installation works at Ngyum-yin
- Prefabrication at Sunrise Workshop
- Offshore site Installation

Client: **Woodside**



CHEVRON

- Supply of GRE 2416C Pipe Fittings
- Installation of GRE WTP Piping (2" - 12")
- Taper/ Taper Adhesive
- Installation of Pipe Supports
- Scope 2 – Modification of 6 x BWI Lines (DN 50 & DN 500) NAOCL & FW Lines

Client: **Chevron**



YARA

- Installation of SCWT Internal Distribution systems (Various GRE pip sizes and Structures)
- Yuri Tie-in Install works
- Supply of Qualified GRE Technicians
- Modification of 40" GRE Lines (Lamination)
- Various other works (Grating)

Client: **Yara**



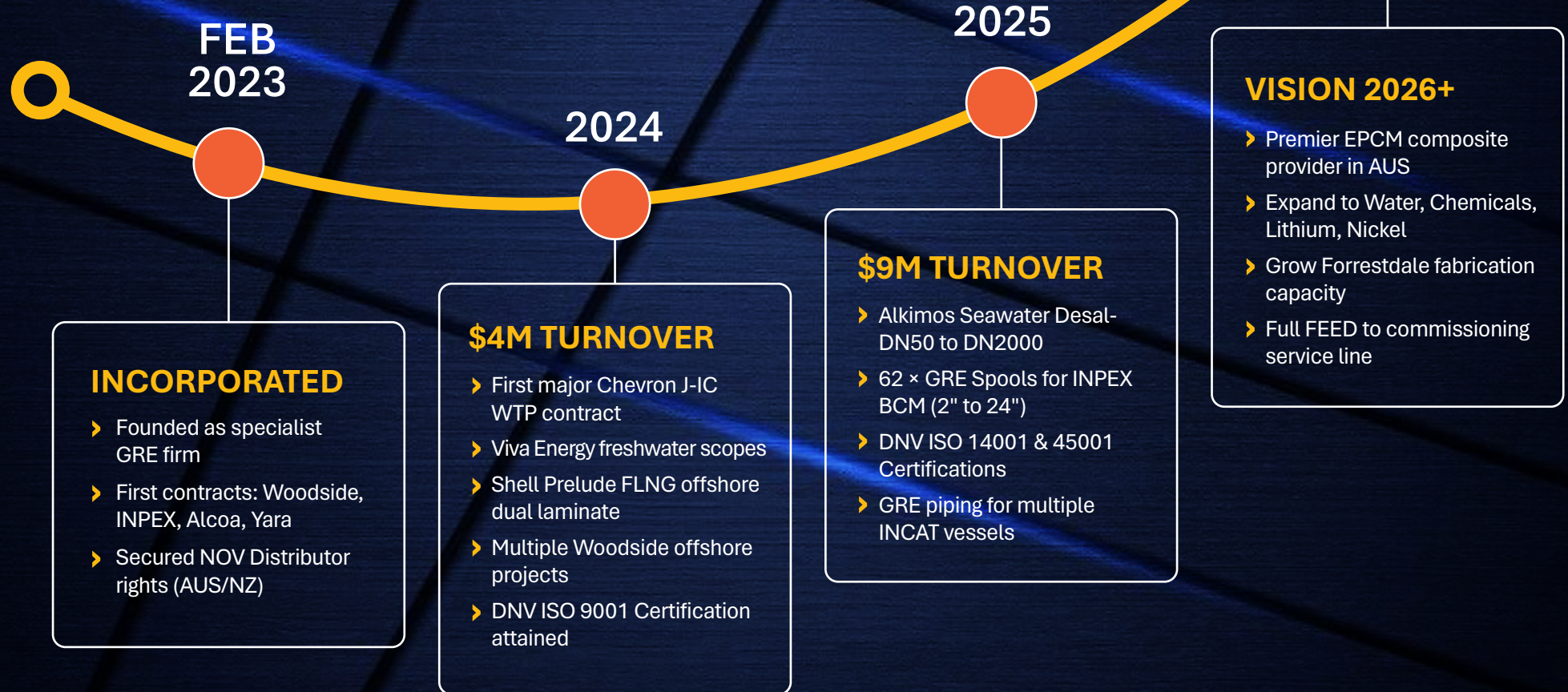
ALCOA

- Supply and Prefabrication of GRVe Piping at 123C
- Size – 6" & 8"
- GRVe Tank relining
- Nozzle Orientations

Client: **Alcoa**

OUR JOURNEY

From incorporation to delivering Australia's largest GRP piping project.



SUNRISE ENGINEERING MARKETS



MINING



OIL & GAS



MARINE OFFSHORE & SUBSEA



FUEL HANDLING



CHEMICAL & INDUSTRIAL



**WATER ENVIRONMENTAL,
FLOW SERVICES**



GEO THERMAL



CARBON CAPTURE



WIND/WAVE



RESOURCES/MINING



HYDROGEN



BIOGAS

**ENERGY
TRANSITION**

OUR TEAM



Sunrise Engineering
(AUST) PTY LTD

📍 2/3 Weedon Road, Forrestdale
Western Australia 6112

✉ sales@sunriseaus.com.au

☎ 08 6491 9080

🌐 www.sunriseaus.com.au